

ADDENDUM

PROJECT:
Clear Creek Middle School
Addition

CONTRACTOR:
Charles Black Construction Co. Inc.
1955 Highway 120 South
Cleveland, GA 30528

ADD NO.: CCMS.ADD.002

PROJECT NO.: 17134

RE: Bid Set Dated: July 9, 2018

DATE: September 17, 2018

TO: Prospective Bidders

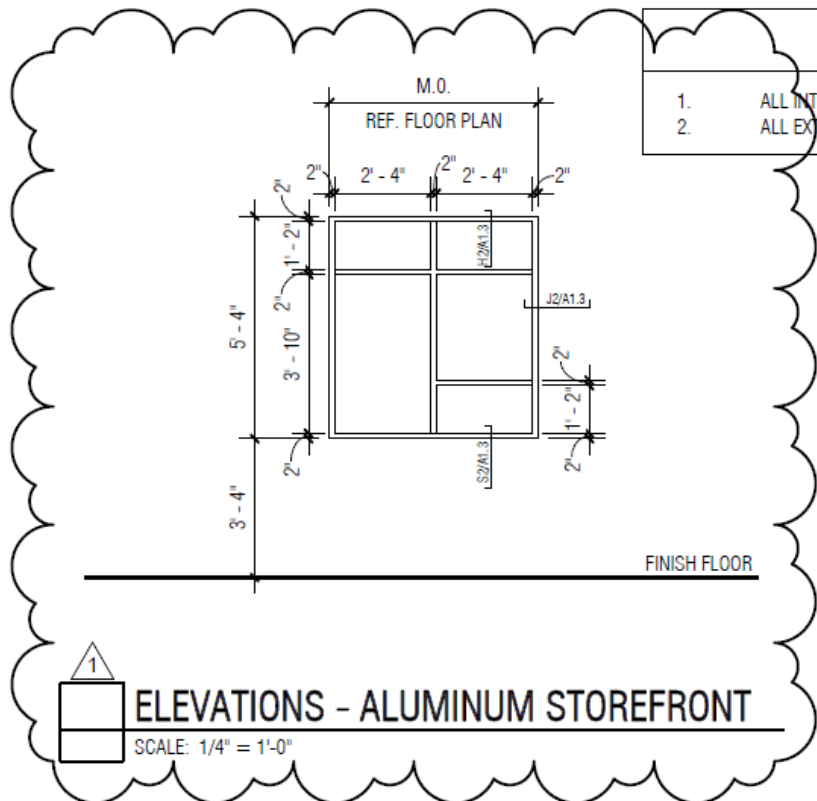
ARCHITECT:
Breux & Associates Architects
5955 Shiloh Road East, Suite 200
Alpharetta, GA 30005

This addendum forms a part of the Contract Documents and modifies the Bidding Documents by additions, deletions, clarifications or corrections. Where a portion of the Bid Documents is modified or deleted by this Addendum, the unaltered portions of the Bidding Documents shall remain in effect. Acknowledge receipt of this addendum on the Bid Form. Failure to do so may subject the Bidder to disqualification.

This Addendum consists of one (1) item.

CHANGES TO DRAWINGS:

- A. Sheet A1.3 – DOOR SCHEDULE, DETAILS AND FINISH SCHEDULE, ELEVATIONS – ALUMINUM STOREFRONT. REVISE *drawing as shown below:*



ATTACHMENTS: None

End of CCMS.ADD.002